

BOX SCORE: \*\*\* FINAL \*\*\*

Date: 03-25-88 Site: State Tourney, Frankfort

Attendance: 3,025

Team: George Rogers Clark

NO.	NAME	TOTAL FG		3-POINT		FT	FTA	REB			PF	TP	A	TO	BLK	S	MIN
		FG	FGA	FG	FGA			O	D	T							
23	Quisenberry, K.	4	11	0	1	2	5	3	2	5	2	10	0	0	0	0	31
35	Wells, Tracy	3	3	0	0	1	1	1	0	1	2	7	0	0	1	0	12
24	Berryman, Jen.	3	9	0	0	0	0	1	2	3	1	6	0	1	0	1	22
11	Phillips, Jessie	3	8	0	0	1	2	0	1	1	3	7	2	4	0	2	25
34	Cline, Shannon	1	7	1	5	1	2	0	0	0	2	4	2	2	0	0	19
30	Robinson, Lea	4	4	0	0	1	2	4	1	5	1	9	1	1	0	2	24
32	Thomas, Maisha	1	3	0	0	1	2	1	0	1	2	3	2	0	0	2	19
42	Oliver, Heather	0	2	0	1	0	0	0	1	1	1	0	0	0	0	0	8
TEAM								1	1	2							
TOTALS		19	47	1	7	7	14	11	8	19	14	46	7	8	1	7	160

Percentages:	Game-----	FG	19/ 47	40.4%	3-PT.	1/ 7	14.3%	Deadball	Rebounds	FT	7/ 14	50.0%
Period 1			7/ 14	50.0%		0/ 1	0.0%				1/ 1	100.0%
Period 2			4/ 11	36.4%		1/ 3	33.3%				0/ 0	0.0%
Period 3			4/ 9	44.4%		0/ 1	0.0%				4/ 8	50.0%
Period 4			4/ 13	30.8%		0/ 2	0.0%				2/ 5	40.0%

Team: Boone County

NO.	NAME	TOTAL FG		3-POINT		FT	FTA	REB			PF	TP	A	TO	BLK	S	MIN
		FG	FGA	FG	FGA			O	D	T							
15	Nickerson, Jill	1	3	0	0	2	2	2	3	5	2	4	6	5	0	0	29
21	Pennington, L.A.	5	8	0	0	1	2	0	2	2	1	11	0	3	0	2	32
22	Davis, Amy	6	10	0	0	4	4	2	7	9	3	16	0	2	0	2	32
44	Murphy, Sara	0	0	0	0	0	0	0	0	0	0	0	0	0	0	0	7
30	Poland, Michelle	2	3	0	0	1	1	3	5	8	1	5	0	1	0	0	29
10	Morrison, Julie	3	7	0	0	7	8	1	1	2	3	13	2	6	0	0	28
35	Rich, Amy	0	1	0	0	0	0	0	0	0	1	0	0	0	0	0	2
42	Neely, Shawnta	0	0	0	0	0	0	0	1	1	1	0	0	0	0	0	1
TEAM								1	2	3							
TOTALS		17	32	0	0	15	17	9	21	30	12	49	8	17	0	4	160

Percentages:	Game-----	FG	17/ 32	53.1%	3-PT.	0/ 0	0.0%	Deadball	Rebounds	FT	15/ 17	88.2%
Period 1			6/ 10	60.0%		0/ 0	0.0%				3/ 3	100.0%
Period 2			3/ 7	42.9%		0/ 0	0.0%				8/ 8	100.0%
Period 3			5/ 9	55.6%		0/ 0	0.0%				0/ 0	0.0%
Period 4			3/ 6	50.0%		0/ 0	0.0%				4/ 6	66.7%

OFFICIALS: Danny Percell, Phillip Tucker, Alt.-G. Gaddie

Technical: None

SCORE BY PERIODS	1	2	3	4	Total
George Rogers Clark	15	9	12	10	= 46
Boone County	15	14	10	10	= 49

2nd Half Play by Play (continued)

PAGE : 3

Player	Team	Boone County	Time	Score	George Rogers Clark	Player	Team
D-4	Tot-5	D-7 Tot-28	Rebound by Davis, Amy	4 1:38			
				4 1:17	Foul on Quisenberry, K.	2	4
				4 1:16	Foul on Phillips, Jessie	3	5
				4 1:16			
			REB: 28 A: 8 BLK: 0 TD: 15 PF: 7			REB: 18 A: 7 BLK: 1 TD: 7 PF: 5	
			S: 4 FT: 11-11 100% FG: 17-32 53.1%	T I M E - O U T	George Rogers Clark No. 2	S: 7 FT: 6-12 50.0% FG: 18-45 40.0%	
7-8	87.5%	12-13 92.3%	Morrison, Julie, 1 & Bonus made 1st missed 2nd	4 1:16 *46-43			
				4 1:14	Rebound by Quisenberry, K.	D-2 Tot-4	D-2 Tot-19
				4 0:53 46-45*	4 ft Lane Driving by Phillips, Jessie, made	3-8 37.5%	19-46 41.3%
				4 0:35	Foul on Thomas, Maisha	2	6
1-2	50.0%	13-15 86.6%	Pennington, L.A., 1 & Bonus made 1st missed 2nd	4 0:35 *47-45			
D-1	Tot-3	D-3 Tot-29	Rebound by Nickerson, Jill	4 0:33			
				4 0:32	Foul on Cline, Shannon	2	7
2-2	100%	15-17 88.2%	Nickerson, Jill, 1 & Bonus made both	4 0:32 *49-45			
				4 0:23	Bad Pass by Cline, Shannon	2	8
5		16	Traveling Violation on Morrison, Julie	4 0:22			
			REB: 29 A: 8 BLK: 0 TD: 16 PF: 7			REB: 19 A: 7 BLK: 1 TD: 8 PF: 7	
			S: 4 FT: 15-17 88.2% FG: 17-32 53.1%	T I M E - O U T	George Rogers Clark No. 3	S: 7 FT: 6-12 50.0% FG: 19-46 41.3%	
				4 0:22	Sub In: Wells, Tracy Out: Thomas, Maisha		
				4 0:13	3 pt 21 ft Right Side Jump shot by Quisenberry, K., missed	4-11 36.3%	19-47 40.4%
D-3	Tot-4	D-8 Tot-30	Rebound by TEAM	4 0:07			
	6	17	Out-of-Bounds by Morrison, Julie	4 0:07			
	1	8	Foul on Pennington, L.A.	4 0:03			
			REB: 30 A: 8 BLK: 0 TD: 17 PF: 8			REB: 19 A: 7 BLK: 1 TD: 8 PF: 7	
			S: 4 FT: 15-17 88.2% FG: 17-32 53.1%	No. 2 Boone County	T I M E - O U T	S: 7 FT: 6-12 50.0% FG: 19-47 40.4%	
				4 0:03	Sub In: Thomas, Maisha Out: Wells, Tracy		
				4 0:03	49-46* Cline, Shannon, 2 Free Throws missed 1st made 2nd	1-2 50.0%	7-14 50.0%

Boone County				Time	Score	George Rogers Clark	Team			
Davis, Amy, Morrison, Julie, Pennington, L.A., Poland, Michelle, Nickerson, Jill				4	7:39	Robinson, Lea, Guisenberry, K., Berryman, Jen., Oliver, Heather, Thomas, Maisha Ball to Lady Cardinals 8 ft Left Base Line Jump shot by Guisenberry, K., missed	3-7	42.8%	15-35	42.8%
D-1	Tot-1	D-1	Tot-20	4	7:37					
Rebound by Davis, Amy				4	7:31	Sub In: Cline, Shannon Out: Berryman, Jen.				
3		11		4	7:31	Steal by Robinson, Lea	1		5	
Bad Pass by Nickerson, Jill				4	7:18					
5-9	55.5%	14-27	51.8%	4	7:15	39-38* Layup Off Fast Break by Robinson, Lea, made	4-4	100%	16-36	44.4%
4 ft Lane Bank by Davis, Amy, missed				4	6:44					
D-1	Tot-1	D-2	Tot-21	4	6:43	Rebound by Guisenberry, K.	D-1	Tot-1	D-1	Tot-15
5-7	71.4%	15-28	53.5%	4	6:26	9 ft Lane Jump shot by Guisenberry, K., missed	3-8	37.5%	16-37	43.2%
16 ft Right Base Line Jump shot by Pennington, L.A., made Assist by Morrison, Julie				4	6:23					
2		8		4	5:55	*41-38				
D-2	Tot-2	D-3	Tot-22	4	5:29	10 ft Lane Driving by Thomas, Maisha, missed	0-1	00.0%	16-38	42.1%
Rebound by Davis, Amy				4	5:29	Foul on Thomas, Maisha	1		2	
3		12		4	5:29	Sub In: Phillips, Jessie Out: Oliver, Heather				
1		4		4	5:22					
Out-of-Bounds by Pennington, L.A. Steal by Pennington, L.A.				4	5:03					
4		13		4	5:01	Dribbling Error on Phillips, Jessie	4		7	
Bad Pass by Morrison, Julie				4	4:58	Steal by Thomas, Maisha	1		6	
				4	4:57					
				4	4:42	3 pt 21 ft Left Side Jump shot by Cline, Shannon, missed	1-6	16.6%	16-39	41.0%
D-1	Tot-1	D-4	Tot-23	4	4:39	Rebound by Thomas, Maisha	0-1	Tot-1	0-1	Tot-16
1-2	50.0%	15-29	51.7%	4	4:39	6 ft Lane Turnaround by Thomas, Maisha, missed	0-2	00.0%	16-40	40.0%
0-1	Tot-1	0-1	Tot-24	4	4:36	Rebound by Guisenberry, K.	0-1	Tot-2	0-2	Tot-17
2-3	66.6%	16-30	53.3%	4	4:36	4 ft Lane Follow by Guisenberry, K., missed	3-9	33.3%	16-41	39.0%
Rebound by TEAM				4	4:33					
4 ft Lane Jump shot by Poland, Michelle, missed				4	4:18					
Rebound by Poland, Michelle				4	4:16					
Follow Layup by Poland, Michelle, made				4	4:16	*43-38				
REB: 24 A: 8 BLK: 0 TO: 13 PF: 5				4	4:02					
S: 4 FT: 11-11 100% FG: 16-30 53.3%				T I M E - O U T		George Rogers Clark No. 1	REB: 17 A: 6 BLK: 1 TO: 7 PF: 2			
						S: 6 FT: 5-9 55.5% FG: 16-41 39.0%				
				4	3:43	10 ft Left Base Line Jump shot by Cline, Shannon, missed	1-7	14.2%	16-42	38.0%
				4	3:41	Rebound by Guisenberry, K.	0-2	Tot-3	0-3	Tot-18
				4	3:41	43-40* 6 ft Left Side Follow by Guisenberry, K., made	4-10	40.0%	17-43	39.5%
				4	3:31	Steal by Thomas, Maisha	2		7	
4		14		4	3:30					
Bad Pass by Nickerson, Jill				4	3:28	43-42* Layup Off Fast Break by Thomas, Maisha, made Assist by Robinson, Lea	1-3	33.3%	18-44	40.9%
2		6		4	3:28		1		7	
Foul on Nickerson, Jill				4	3:23	Guisenberry, K., 1 Free Throw missed	2-5	40.0%	5-10	50.0%
D-3	Tot-3	D-5	Tot-25	4	3:23					
5		15		4	3:12					
Rebound by Davis, Amy				4	2:48	14 ft Left Base Line Jump shot by Phillips, Jessie, missed	2-7	28.5%	18-45	40.0%
Traveling Violation on Nickerson, Jill				4	2:47					
D-2	Tot-2	D-6	Tot-26	4	2:30	Foul on Phillips, Jessie	2		3	
5-8	62.5%	16-31	51.6%	4	2:08					
12 ft Right Base Line Jump shot by Pennington, L.A., missed				4	2:05					
Rebound by Davis, Amy				4	2:05	*45-42				
0-1	Tot-4	0-2	Tot-27	4	2:05					
6-10	60.0%	17-32	53.1%	4	1:40					
3		7		4	1:40	45-43* Phillips, Jessie, 2 Free Throws made 1st missed 2nd	1-2	50.0%	6-12	50.0%
Follow Layup by Davis, Amy, made										
Foul on Morrison, Julie										

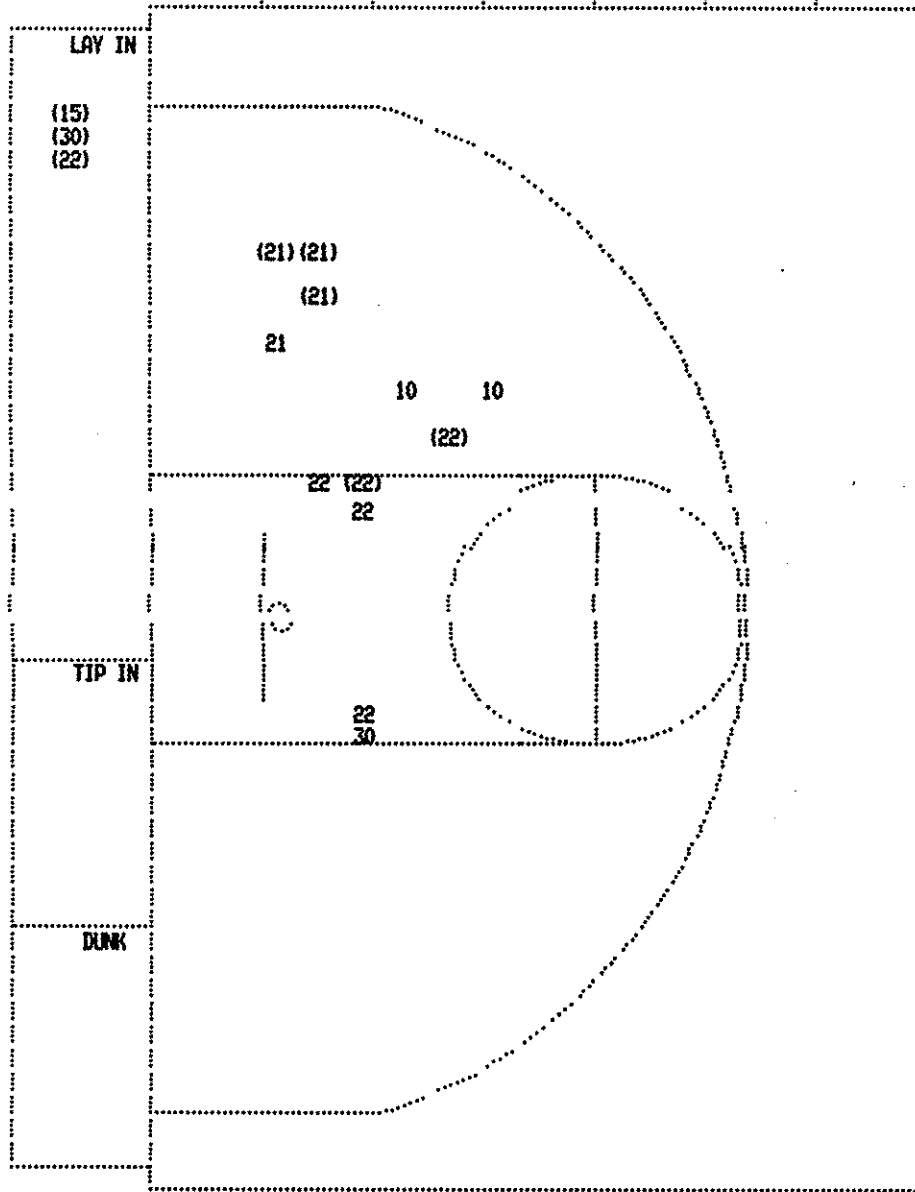
George Rogers Clark "Lady Cardinals" vs Boone County "Lady Rebels"  
2nd Half Play by Play

Tip off at 9:00 p.m. on 03/25/88 at State Tourney, Frankfort  
Produced by the K.H.S.A.A. Stat Crew with FINL III\*\*

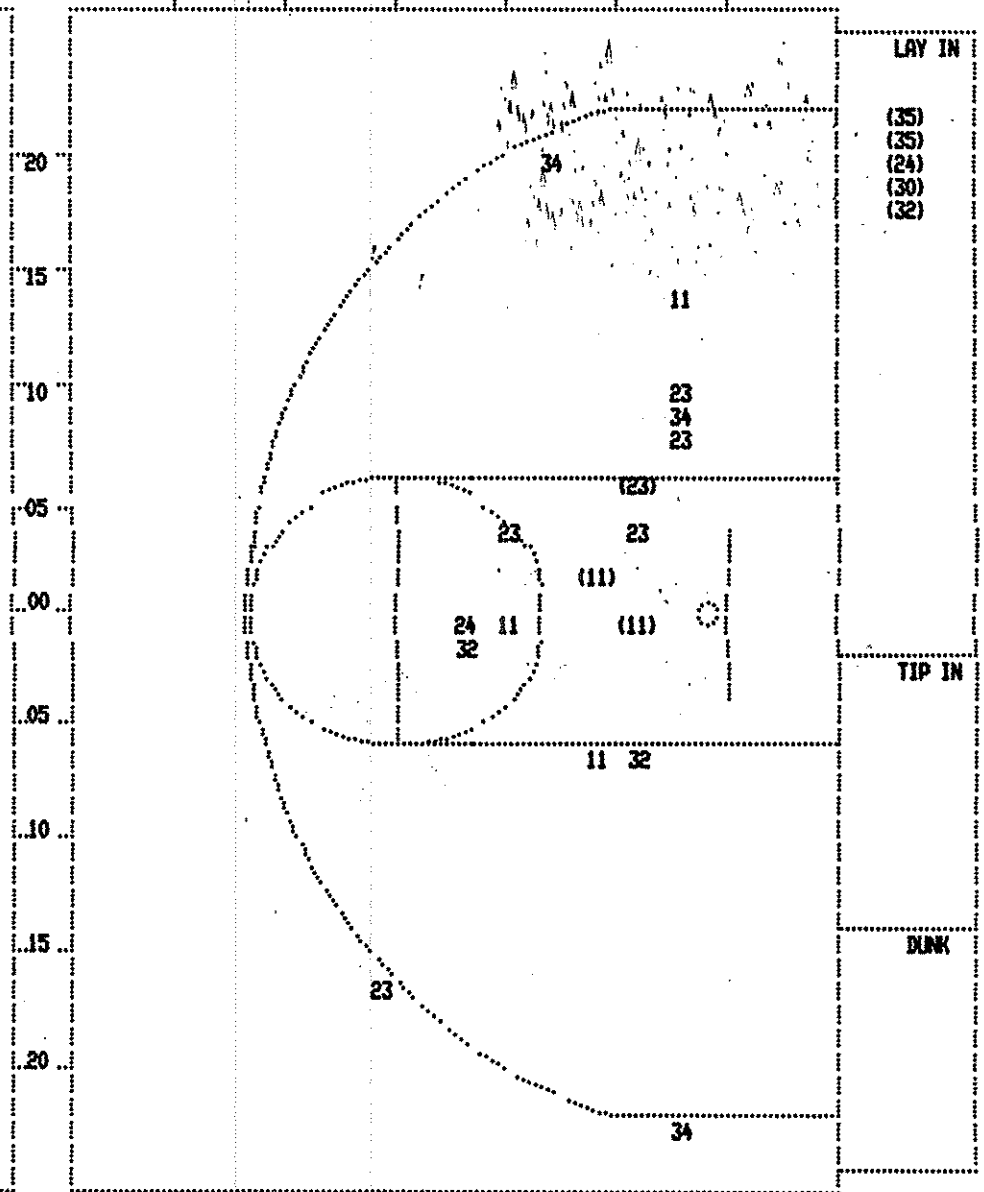
PAGE : 1

Player	Team	Boone County	Time	Score	George Rogers Clark	Player	Team			
Morrison, Julie, Nickerson, Jill, Pennington, L.A., Davis, Amy, Poland, Michelle					Quisenberry, K., Wells, Tracy, Berryman, Jen., Phillips, Jessie, Cline, Shannon Ball to Lady Cardinals					
4-5	80.0%	10-19 52.6%	6 ft Lane Bank by Davis, Amy	3 6:57	29-26*	2 ft Lane Driving by Phillips, Jessie	2-5	40.0%	12-27	44.4%
4		5	Assist by Nickerson, Jill	3 6:37	*31-26					
2		1	Player Control Foul on Morrison, Julie	3 6:12						
			Sub In: Murphy, Sara Out: Poland, Michelle	3 6:12						
1		2	Foul on Davis, Amy	3 5:53						
				3 5:53	31-27*	Quisenberry, K., 2 Free Throws missed 1st made 2nd.	1-2	50.0%	2-3	66.6%
				3 5:09		Foul on Wells, Tracy	2			1
1-3	33.3%	11-21 52.3%	Follow Layup by Nickerson, Jill	3 4:56	*33-27					
				3 4:33	33-29*	Driving Layup by Wells, Tracy	2-2	100%	13-29	44.8%
						Assist by Cline, Shannon	2			5
				3 4:31		Sub In: Thomas, Maisha Out: Cline, Shannon				
				3 4:06	33-31*	Driving Layup by Wells, Tracy	3-3	100%	14-30	46.6%
						Assist by Phillips, Jessie	2			6
			REB: 13 A: 5 BLK: 0 TO: 7 PF: 2	3 3:49		REB: 13 A: 6 BLK: 1 TO: 6 PF: 1				
			S: 3 FT: 11-11 100% FG: 11-21 52.3%	No. 1 Boone County	T I M E - O U T	S: 2 FT: 2-3 66.6% FG: 14-30 46.6%				
				3 3:49		Sub In: Robinson, Lea Out: Quisenberry, K.				
				3 3:19	33-33*	Layup Off Fast Break by Berryman, Jen.	3-8	37.5%	15-31	48.3%
			Sub In: Poland, Michelle Out: Murphy, Sara	3 3:17						
				3 3:17		Sub In: Quisenberry, K. Out: Berryman, Jen.				
5-7	71.4%	12-23 52.1%	10 ft Right Side Follow by Davis, Amy	3 3:00	*35-33					
2		3	Foul on Davis, Amy	3 2:42						
				3 2:42	35-34*	Thomas, Maisha, 2 Free Throws missed 1st made 2nd	1-2	50.0%	3-5	60.0%
3-5	60.0%	13-24 54.1%	14 ft Right Base Line Jump shot by Pennington, L.A.	3 2:03	*37-34					
5		6	Assist by Nickerson, Jill							
				3 1:08		Sub In: Berryman, Jen. Out: Wells, Tracy				
3		4	Foul on Davis, Amy	3 0:44						
				3 0:44		Sub In: Oliver, Heather Out: Phillips, Jessie				
			Sub In: Neely, Shawnta Out: Davis, Amy	3 0:44						
				3 0:44	37-35*	Quisenberry, K., 2 Free Throws made 1st missed 2nd	2-4	50.0%	4-7	57.1%
4-6	66.6%	14-26 53.8%	16 ft Right Base Line Jump shot by Pennington, L.A.	3 0:29	*39-35					
6		7	Assist by Nickerson, Jill							
1		5	Foul on Neely, Shawnta	3 0:01						
				3 0:01	39-36*	Robinson, Lea, 2 Free Throws made 1st missed 2nd	1-2	50.0%	5-9	55.5%

SECOND HALF SHOT CHART Produced by the K.H.S.A.A. Stat Crew with FINAL III\*\*



Boone County Player	Player	Player	Player	Player	Player
15 - Nickerson,	1 / 1	100.0%			
22 - Davis, Ray	3 / 6	50.0%			
10 - Morrison,	0 / 2	0.0%			
21 - Pennington	3 / 4	75.0%			
30 - Poland, Mic	1 / 2	50.0%			
Layups	1-9 Ft	10-15 Ft	Over 15 Ft	3 Pointers	Total
3 / 3	1 / 5	2 / 5	2 / 2		8 / 15
100.0%	20.0%	40.0%	100.0%		53.3%



George Rogers Clark Player	Player	Player	Player	Player	Player
23 - Quisenberry	1 / 6	16.6%	30 - Robinson,	1 / 1	100.0%
35 - Wells, Tra	2 / 2	100.0%	32 - Thomas, Ma	1 / 3	33.3%
24 - Berryman,	1 / 2	50.0%			
11 - Phillips, J	2 / 5	40.0%			
34 - Cline, Sha	0 / 3	0.0%			
Layups	1-9 Ft	10-15 Ft	Over 15 Ft	3 Pointers	Total
5 / 5	3 / 9	0 / 5		0 / 3	8 / 22
100.0%	33.3%	0.0%		0.0%	36.4%

BOX SCORE: \* OFFICIAL FIRST HALF \* Date: 03-25-88 Site: State Tourney, Frankfort Attendance: 3,025

Team: George Rogers Clark

NO.	NAME	TOTAL FG		3-POINT		FT	FTA	REB			PF	TP	A	TO	BLK	S	MIN
		FG	FGA	FG	FGA			O	D	T							
23	Quisenberry, K.	3	5	0	0	0	0	1	0	1	1	6	0	0	0	0	15
35	Wells, Tracy	1	1	0	0	1	1	1	0	1	1	3	0	0	1	0	4
24	Berryman, Jen.	2	7	0	0	0	0	1	2	3	1	4	0	1	0	0	16
11	Phillips, Jessie	1	3	0	0	0	0	0	0	0	1	2	1	2	0	0	12
34	Cline, Shannon	1	4	1	3	0	0	0	0	0	1	3	1	1	0	0	9
30	Robinson, Lea	3	3	0	0	0	0	3	1	4	1	6	0	1	0	1	12
32	Thomas, Maisha	0	0	0	0	0	0	0	0	0	0	2	0	0	0	0	7
42	Oliver, Heather	0	2	0	1	0	0	0	1	1	1	0	0	0	0	0	4
TEAM								1	1	2							
TOTALS		11	25	1	4	1	1	7	5	12	7	24	4	5	1	1	80
Percentages:		HALF-----		FG	11/ 25	44.0%	3-PT.	1/ 4	25.0%	FT	1/ 1	100.0%	0 Deadball Rebounds				
		Period 1		7/ 14	50.0%		0/ 1	0.0%		1/ 1	100.0%						
		Period 2		4/ 11	36.4%		1/ 3	33.3%		0/ 0	0.0%						

Team: Boone County

NO.	NAME	TOTAL FG		3-POINT		FT	FTA	REB			PF	TP	A	TO	BLK	S	MIN
		FG	FGA	FG	FGA			O	D	T							
15	Nickerson, Jill	0	2	0	0	0	0	0	2	2	1	0	3	1	0	0	13
21	Pennington, L.A.	2	4	0	0	0	0	0	1	1	0	4	0	1	0	0	16
22	Davis, Amy	3	4	0	0	4	4	0	2	2	0	10	0	1	0	2	16
44	Murphy, Sara	0	0	0	0	0	0	0	0	0	0	0	0	0	0	0	3
30	Foland, Michelle	1	1	0	0	1	1	1	1	2	1	3	0	0	0	0	16
10	Morrison, Julie	3	5	0	0	6	6	1	1	2	1	12	1	1	0	0	13
35	Rich, Amy	0	1	0	0	0	0	0	0	0	1	0	0	0	0	0	3
TEAM								1	1	1							
TOTALS		9	17	0	0	11	11	3	7	10	4	29	4	4	0	2	80
Percentages:		HALF-----		FG	9/ 17	52.9%	3-PT.	0/ 0	0.0%	FT	11/ 11	100.0%	0 Deadball Rebounds				
		Period 1		6/ 10	60.0%		0/ 0	0.0%		3/ 3	100.0%						
		Period 2		3/ 7	42.9%		0/ 0	0.0%		8/ 8	100.0%						

OFFICIALS: Danny Percell, Phillip Tucker, Alt.-G. Gaddie SCORE BY PERIODS

Technical: None

George Rogers Clark 15 9 = 24  
Boone County 15 14 = 29



George Rogers Clark "Lady Cardinals" vs Boone County "Lady Rebels"  
1st Half Play by Play

Tip off at 9:00 p.m. on 03/25/88 at State Tourney, Frankfort  
Produced by the K.H.S.A.A. Stat Draw with FINWL III

PAGE : 1

Player	Team	Boone County	Time	Score	George Rogers Clark	Player	Team
Nickerson, Jill	Pennington, L.A.	Davis, Amy, Murphy, Sara, Poland, Michelle			Quisenberry, K., Wells, Tracy, Berryman, Jen., Phillips, Jessie, Cline, Shannon		
1-1	100%	1-1 100%	15 ft Lane Jump shot by Pennington, L.A.	1 7:07	*2-0		
			Assist by Nickerson, Jill				
1-1	100%	2-3 66.6%	2 ft Lane Follow by Poland, Michelle	1 6:32	2-2*	7 ft Lane Jump shot by Quisenberry, K.	1-1 100% 1-3 33.3%
				1 6:04	*4-2		
1-1	100%	1-1 100%	Poland, Michelle, 1 Free Throw made	1 6:04	*5-2	Foul on Wells, Tracy	1 1
			Foul on Poland, Michelle	1 5:50			
1-1	100%	3-5 60.0%	7 ft Left Side Turnaround by Davis, Amy	1 5:35	*7-2		
			Assist by Nickerson, Jill				
			Sub In: Morrison, Julie Out: Murphy, Sara	1 5:15	7-4*	6 ft Left Side Turnaround by Berryman, Jen.	1-3 33.3% 2-5 40.0%
				1 4:38		Assist by Cline, Shannon	1 1
			Foul on Nickerson, Jill	1 4:18	7-6*	3 ft Lane Follow by Wells, Tracy	1-1 100% 3-8 37.5%
				1 4:17			
				1 4:17	7-7*	Wells, Tracy, 1 Free Throw made	1-1 100% 1-1 100%
				1 4:08		Sub In: Robinson, Lea Out: Wells, Tracy	
1-1	100%	4-7 57.1%	6 ft Left Base Line Jump shot by Morrison, Julie	1 3:44	*9-7		
			Foul on Morrison, Julie	1 3:23			
				1 3:20		Sub In: Thomas, Maisha Out: Cline, Shannon	
				1 3:07		Foul on Berryman, Jen.	1 2
2-2	100%	5-8 62.5%	Driving Layup by Davis, Amy	1 2:55	*11-7		
			Assist by Morrison, Julie				
				1 2:29	11-9*	4 ft Lane Follow by Robinson, Lea	1-1 100% 4-10 40.0%
				1 2:04	11-11*	10 ft Left Base Line Jump shot by Quisenberry, K.	2-2 100% 5-11 45.4%
						Assist by Phillips, Jessie	1 2
				1 1:26	11-13*	6 ft Left Side Follow by Robinson, Lea	2-2 100% 6-13 46.1%
				1 1:13	*13-13		
				1 0:37	13-15*	4 ft Lane Bank by Quisenberry, K.	3-3 100% 7-14 50.0%
						Assist by Thomas, Maisha	1 3
				1 0:04		Foul on Phillips, Jessie	1 3
			Sub In: Rich, Amy Out: Nickerson, Jill	1 0:04			
			Morrison, Julie, 2 Free Throws made both	1 0:04	*15-15		



